

mullins wheels PRODUCT BULLETIN

Mounting of RoadKing Alloy Wheels with Sleeved (Retro) Wheel Nuts

RoadKing		RETRO FIT NUTS
FINISH	PART NO.	DESCRIPTION
Black	725-980	Front Short - M22x1.5 - Right Hand Thread
Black	725-981	Rear Long - M22x1.5 - Right Hand Thread
Black	725-980L	Front Short - M22x1.5 - Left Hand Thread
Black	725-981L	Rear Long - M22x1.5 - Left Hand Thread
Black	725-988	Rear Long - M18x1.5 - Right Hand Thread
Zinc	725-971	Front Short - M22x1.5 - Right Hand Thread
Zinc	725-972	Rear Long - M22x1.5 - Right Hand Thread
Zinc	725-973	Front Short - M22x1.5 - Left Hand Thread
Zinc	725-974	Rear Long - M22x1.5 - Left Hand Thread



When fitting RoadKing Retro Forged Alloy Truck Wheels, the standard wheel stud length can accommodate the fitting of Mullins forged alloy truck wheels. It is common to fit forged alloy truck wheels, where previously steel wheels were fitted.

However with the increased overall centre disc thickness, a special sleeved nut (Retro Fit Nut) must be used. The shank or sleeve of these nuts extends into the mounting holes of the wheel centre and engages with the standard stud length, ensuring sufficient thread engagement. Mullins Retro Forged Alloy truck wheels have a special 32 mm diameter stud hole diameter to accommodate the special sleeved nuts.

The recommended length of engagement between the threads of the stud and the sleeved nut is equivalent to 95% or more of the diameter of the stud.

The minimum recommended number of thread engagement between the nut & stud is:
Approx 14 full turns for M22 x 1.5 Retro Nuts

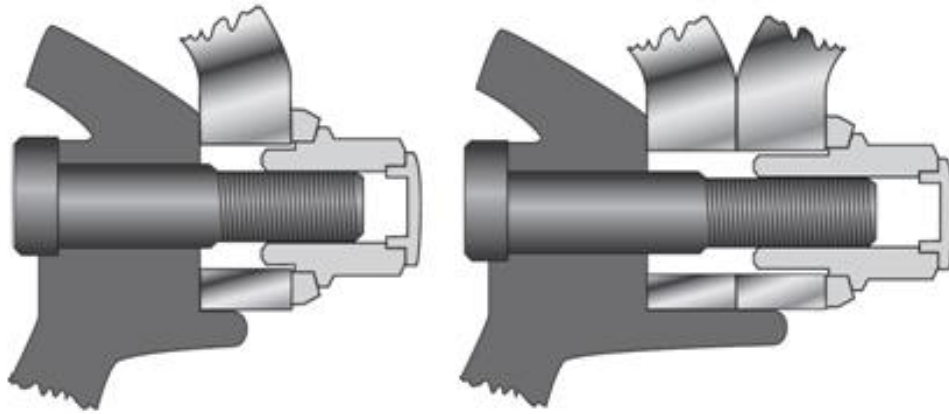


Mounting of RoadKing Alloy (Retro) Truck Wheels:

How to Check for Sufficient Thread Engagement:

Engage a single wheel or dualled wheels to the hub with at least two nuts securing the wheels. Tighten one nut by hand and count the number of full turns till the nut sits snugly.

Note: The sleeves of the nut do not center the wheel(s). This mounting system still requires a hub piloting or hub centering axle and a wheel with the correct centre bore diameter.



Short (front) and long (rear) sleeved retro truck wheel nuts are available from Mullins wheels for most popular “Retro-Fit” applications. For the correct torque setting for your wheels you should refer to the recommended setting as published by your truck / trailer or axle manufacturer.



Retro Fit Alloy
Hino Truck



To check out more of the CSA range and other vehicle fitment applications, visit us online today at

www.csadirect.com.au

think big